



NJ Solar Market Update As of 6/30/15

Prepared by Charlie Garrison
July 17, 2015

SOLAR INSTALLED CAPACITY DATA



- The preliminary installed solar capacity as of 6/30/15 is approximately 1,500.7 MW.
 - Approximately 14.4 MW reported as installed in June.
 - 37,021 solar installations
- The preliminary solar project pipeline capacity as of 6/30/15 is approximately 402.9 MW.
 - 8,484 projects in solar pipeline

For program reporting purposes, projects have achieved the "Installed" designation when the Final as-built documents are received and accepted by the Market Manager (noted as QC or QA Selected status in the project list).

NJCEP SOLAR INSTALLED PROJECTS PLUS PIPELINE HISTORY



NJCEP Solar Installed Projects Plus Pipeline History as of 6/30/15			
As Of	MW Installed	MW Pipeline	Combined MW
1/31/2014	1,201.4	323.5	1,524.9
2/28/2014	1,245.5	284.7	1,530.2
3/31/2014	1,267.1	224.8	1,491.9
4/30/2014	1,272.9	357.2	1,630.1
5/31/2014	1,298.1	352.9	1,651.0
6/30/2014	1,319.2	345.7	1,664.9
7/31/2014	1,336.8	358.3	1,695.1
8/31/2014	1,344.6	361.5	1,706.1
9/30/2014	1,354.0	359.2	1,713.3
10/31/2014	1,365.7	377.1	1,742.8
11/30/2014	1,373.4	391.9	1,765.3
12/31/2014	1,431.9	351.9	1,783.9
1/31/2015	1,438.9	355.8	1,794.6
2/28/2015	1,456.6	349.8	1,806.4
3/31/2015	1,469.7	395.8	1,865.5
4/30/2015	1,478.8	389.1	1,867.9
5/31/2015	1,486.3	406.3	1,892.6
6/30/2015	1,500.7	402.9	1,903.6

Preliminary values for 6/30/15

NJCEP SOLAR INSTALLED PROJECTS PLUS PIPELINE PROJECTS SUMMARY



Preliminary Values As of 6/30/15

Installed Solar Projects

Interconnection Type	Project Qty	Total Capacity (KW DC)	Percent of Capacity	Avg System Size (kW DC)
Behind the meter	36,894	1,179,088.6	78.6%	32.0
Direct Grid Supply	127	321,616.8	21.4%	2,532.4
Installed Totals	37,021	1,500,705.4	100.0%	40.5

Solar Project Pipeline

Interconnection Type	Project Qty	Total Capacity (KW DC)	Percent of Capacity	Avg System Size (kW DC)
Behind the meter	8,446	126,351.7	31.4%	15.0
Direct Grid Supply	38	276,500.4	68.6%	7,276.3
Pipeline Totals	8,484	402,852.1	100.0%	47.5

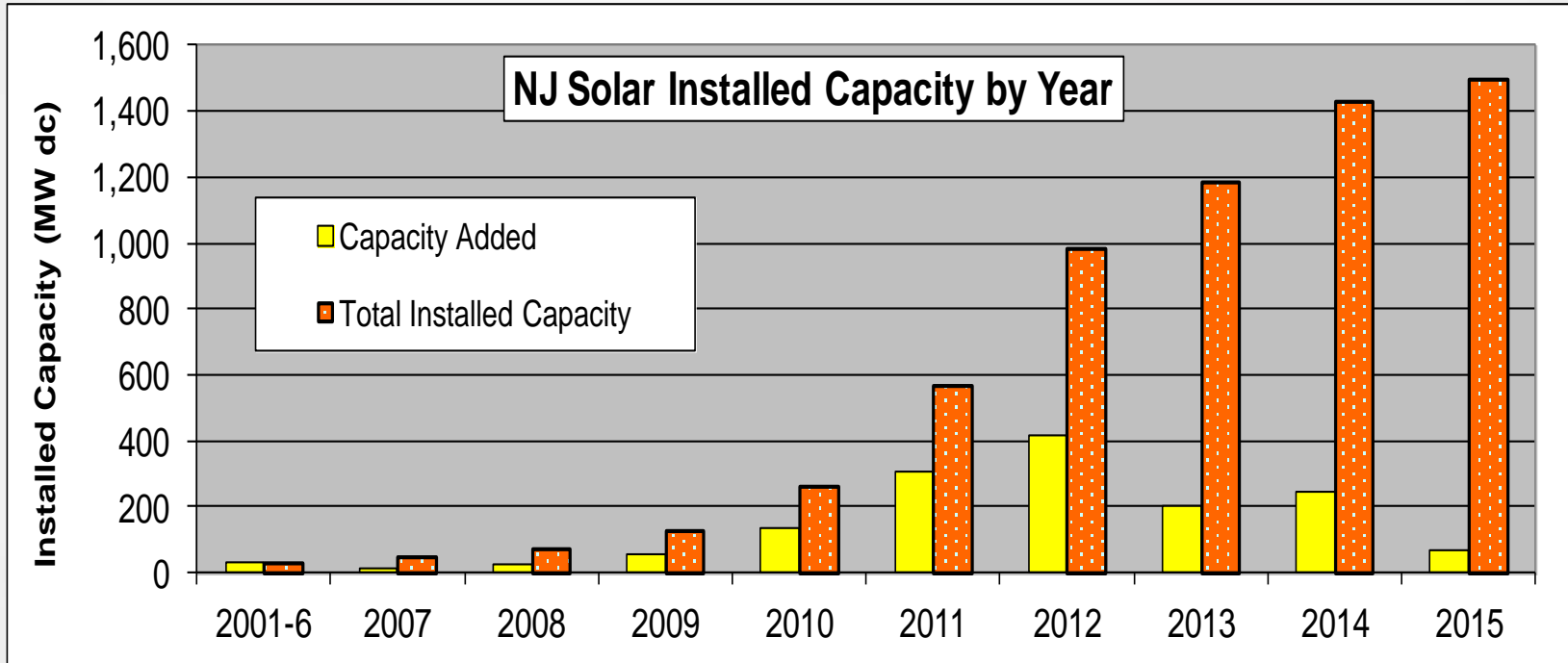
Totals For All Projects	45,505	1,903,557.5		41.8
--------------------------------	---------------	--------------------	--	-------------

NEW JERSEY SOLAR INSTALLATIONS BY YEAR AS OF 6/30/15



Year	# Projects	Total kW	Total Rebate \$
2001-06	2,020	32,001.8	\$ 142,689,908
2007	693	15,255.1	\$ 58,122,386
2008	833	22,711.3	\$ 44,923,416
2009	1,349	57,254.3	\$ 56,026,262
2010	3,131	132,383.4	\$ 45,961,190
2011	5,397	305,199.0	\$ 13,383,747
2012	5,902	417,344.4	\$ 2,389,758
2013	6,539	202,247.0	\$ 4,691
2014	6,522	247,433.5	\$ -
2015	4,635	68,875.7	\$ -
Total	37,021	1,500,705.4	\$ 363,501,358

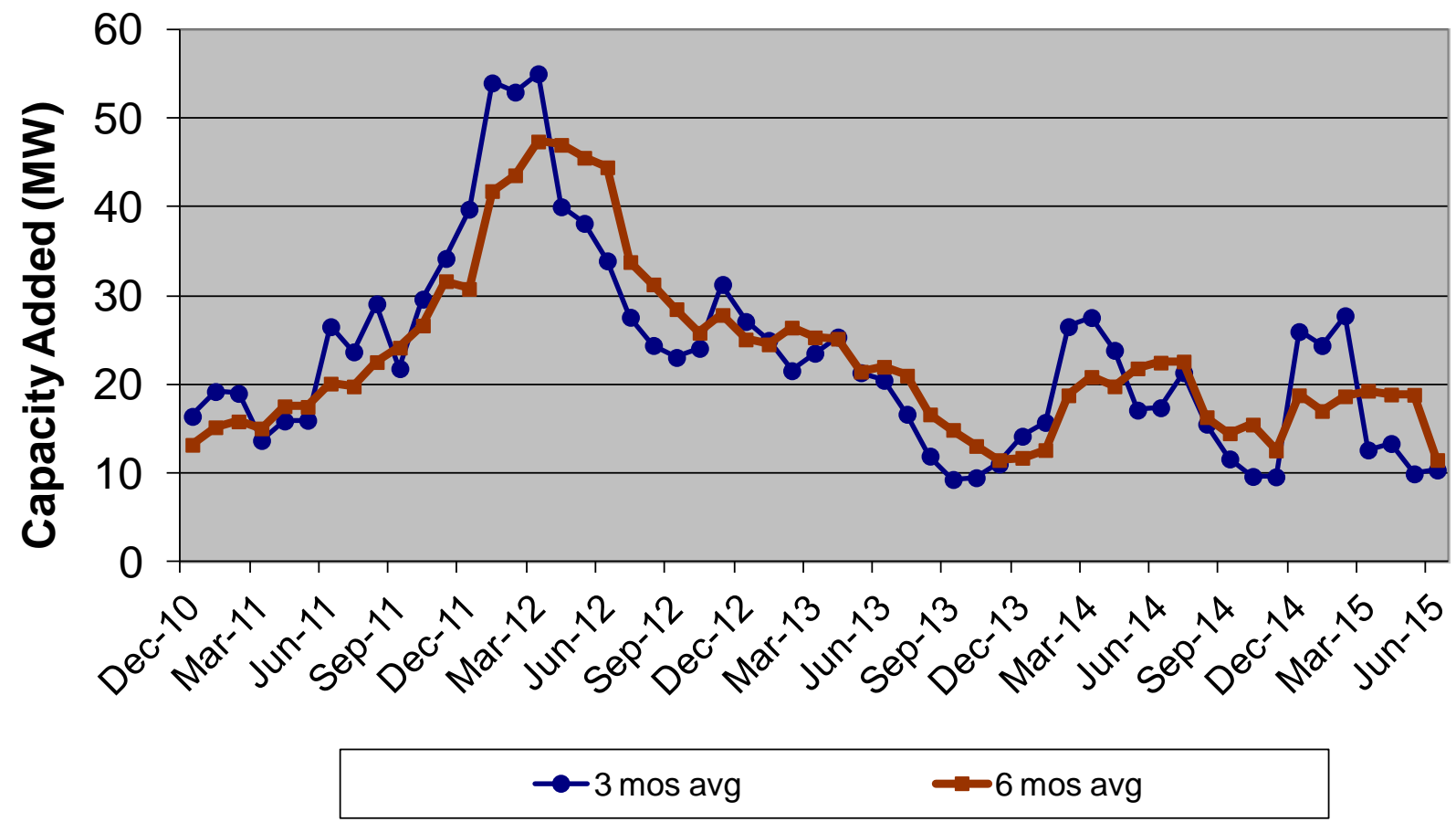
NEW JERSEY SOLAR INSTALLATIONS BY YEAR AS OF 6/30/15



SOLAR INSTALLED CAPACITY ALL PROJECTS



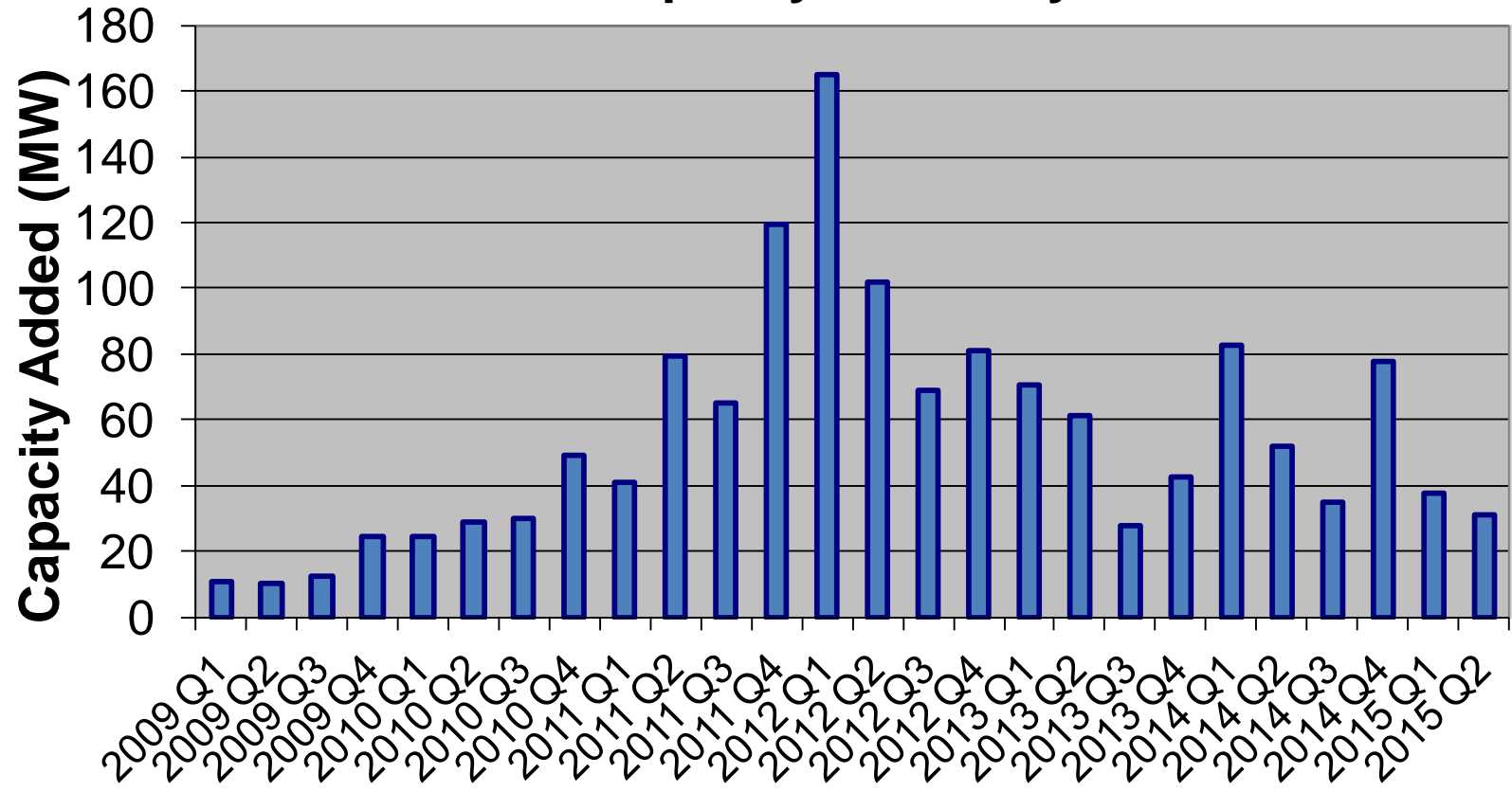
3 & 6 Month Moving Average of Total Capacity Added



SOLAR INSTALLED CAPACITY ADDED BY QUARTER



Total Capacity Added by Quarter



NJCEP SOLAR GENERATION SCENARIOS EY 2015



End Date	12/31/14	01/31/15	02/28/15	03/31/15	04/30/15	05/31/15	06/30/15	07/31/15	08/31/15	09/30/15	10/31/15	11/30/15	12/31/15
Forecast - Low	1,431.8	1,438.8	1,456.6	1,469.7	1,478.8	1,486.3	1,500.7	1,525.8	1,552.5	1,576.1	1,598.9	1,621.1	1,643.0
Forecast - High	1,431.8	1,438.8	1,456.6	1,469.7	1,478.8	1,486.3	1,500.7	1,542.6	1,587.0	1,626.4	1,664.4	1,701.3	1,737.8

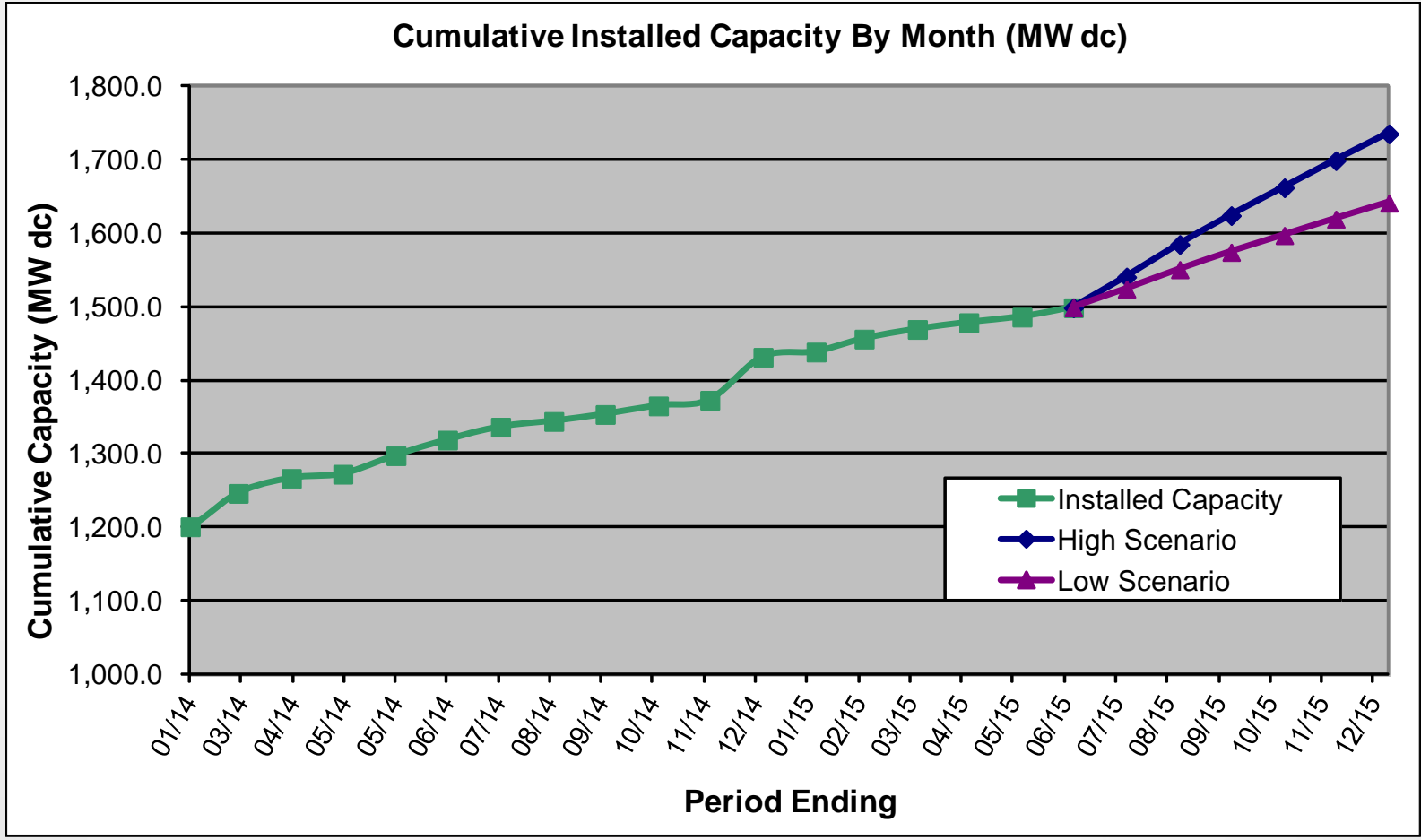
The 1486.3 MW of solar capacity installed as of the end of Energy Year 2015 on 5/31/15 is estimated to be capable of producing approximately 1,684,500 SRECs from electricity generated during Energy Year 2015.

This data is provided for informational purposes only. Past levels of installed capacity rates are not predictive of future values, and any persons considering investment in the solar market should perform their independent due diligence.

NJCEP SOLAR GENERATION SCENARIOS EY 2015



NJCEP Solar Installed Capacity Scenarios As Of 06/30/15



SREC TRADING STATISTICS ENERGY

YEAR 2015

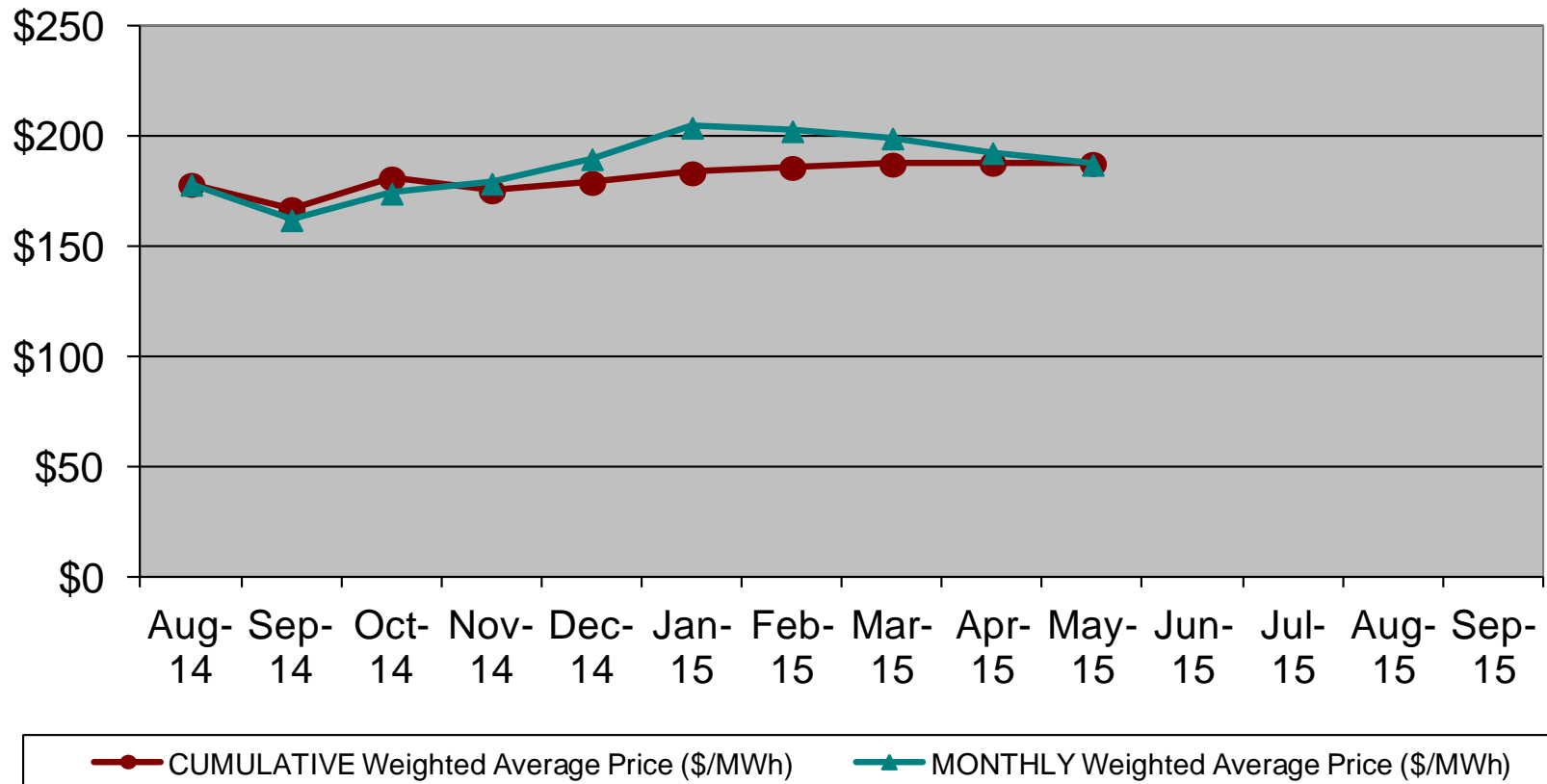


EY 2015 SACP= \$331			SREC Quantity		Monthly		Cumulative	
Month	Year	Active kW DC	Issued in Month	Traded in Month	High (\$/MWh)	Low (\$/MWh)	# of SRECs Traded	Weighted Avg Price (\$/MWh)
May	2015	1,438,168	180,995	202,367	\$ 485	\$ 95	1,551,376	\$187.76
Apr	2015	1,430,307	115,679	95,912	\$ 490	\$ 70	1,349,009	\$187.82
Mar	2015	1,421,161	85,161	141,976	\$ 495	\$ 48	1,253,097	\$187.45
Feb	2015	1,414,235	74,497	142,317	\$ 488	\$ 67	1,111,121	\$185.93
Jan	2015	1,369,682	62,856	169,175	\$ 590	\$ 46	968,804	\$183.49
Dec	2014	1,353,332	98,501	208,575	\$ 486	\$ 70	799,629	\$179.11
Nov	2014	1,346,181	103,381	139,726	\$ 518	\$ 41	591,054	\$175.31
Oct	2014	1,337,419	152,339	226,727	\$ 518	\$ 70	451,328	\$181.15
Sept	2014	1,320,364	164,188	153,637	\$ 518	\$ 70	224,601	\$167.25
Aug	2014	1,314,799	163,745	66,311	\$ 518	\$ 70	70,964	\$178.25
July	2014	1,309,916	150,158	4,653	Due to low trade volume, the July trades are reported with the pricing data for August.			
	Total		1,351,500	1,551,376				

SREC TRADING STATISTICS ENERGY YEAR 2015



NJ SREC Trading Price - Energy Year 2015 (SACP = \$331)





For More Information
Visit NJCleanEnergy.com
Call (866) NJSMART

New Jersey Clean Energy Program Renewable Energy Reports

- Installation Summary by Technology
<http://www.njcleanenergy.com/projectreports>
- Program Status Reports <http://www.njcleanenergy.com/statusreports>
- NJ SREC Trading Statistics for each Energy Year
<http://www.njcleanenergy.com/srecpricing>

For the latest updates on program announcements or new incentives, subscribe to the NJ Clean Energy Program **E-Newsletter** at: NJCleanEnergy.com.